

**5.-6. October 2011  
Jūrmala, Latvia**

# GORWIND progress meeting: WP3 birds



Andres Kuresoo & Leho Luigujõe  
EULS

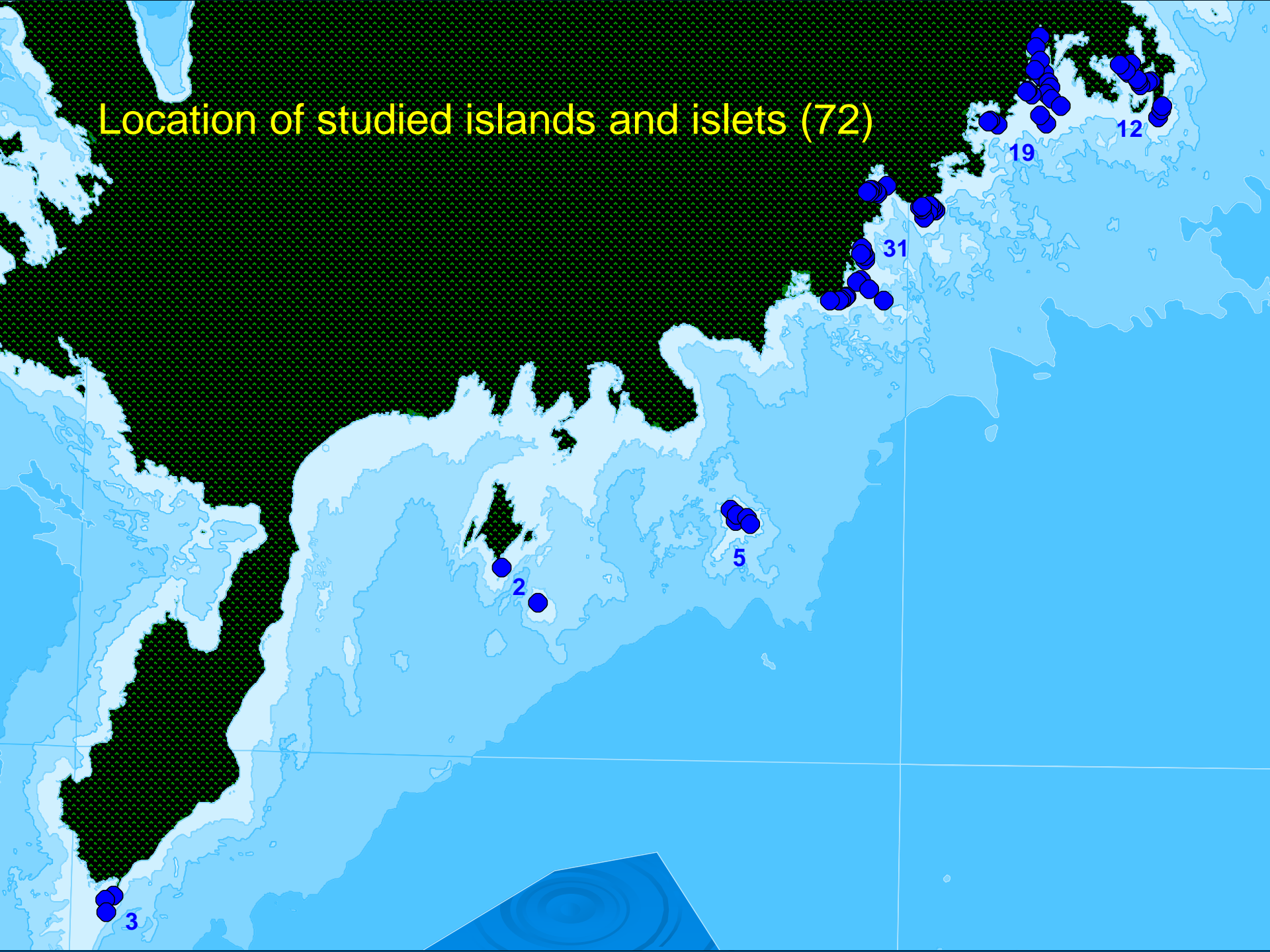
# Survey of island breeding birds

- 71 islands and islets (50 planned)
- Counts 18.05-17.06 (23 man-days)
- 48 species breeding (incl 12 sp. of passerines)
- Counted 12 900 breeding pairs of birds
- Most common species: Cormorant (4200 p), Black-headed Gull (2260), Arctic Tern (2000), Mew Gull (1420)





## Location of studied islands and islets (72)







**Common birds: Cormorants and Herring Gulls**



## Rare birds: Caspian Tern

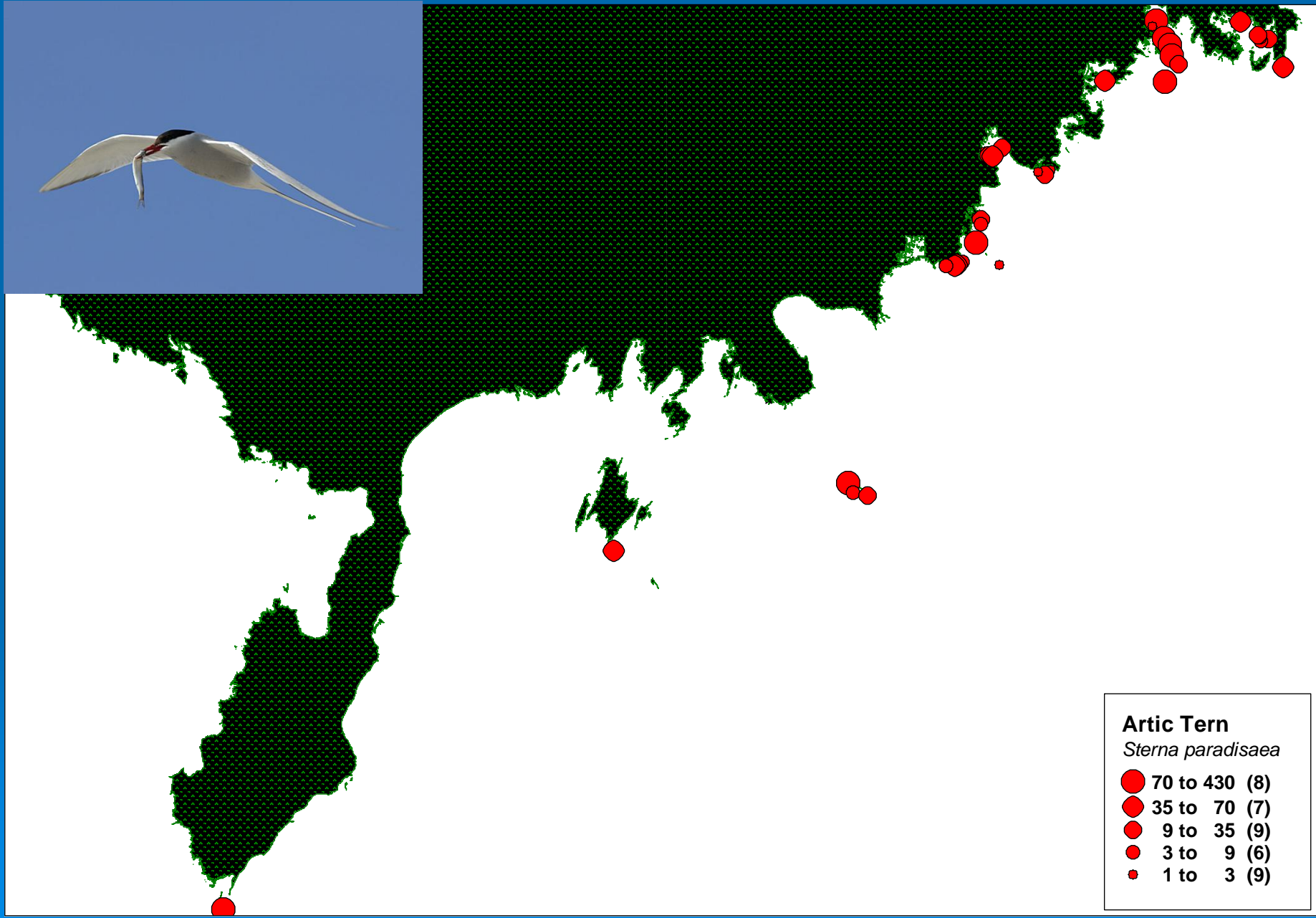




Common mammals: Grey Seal



# Arctic Tern: 39 colonies

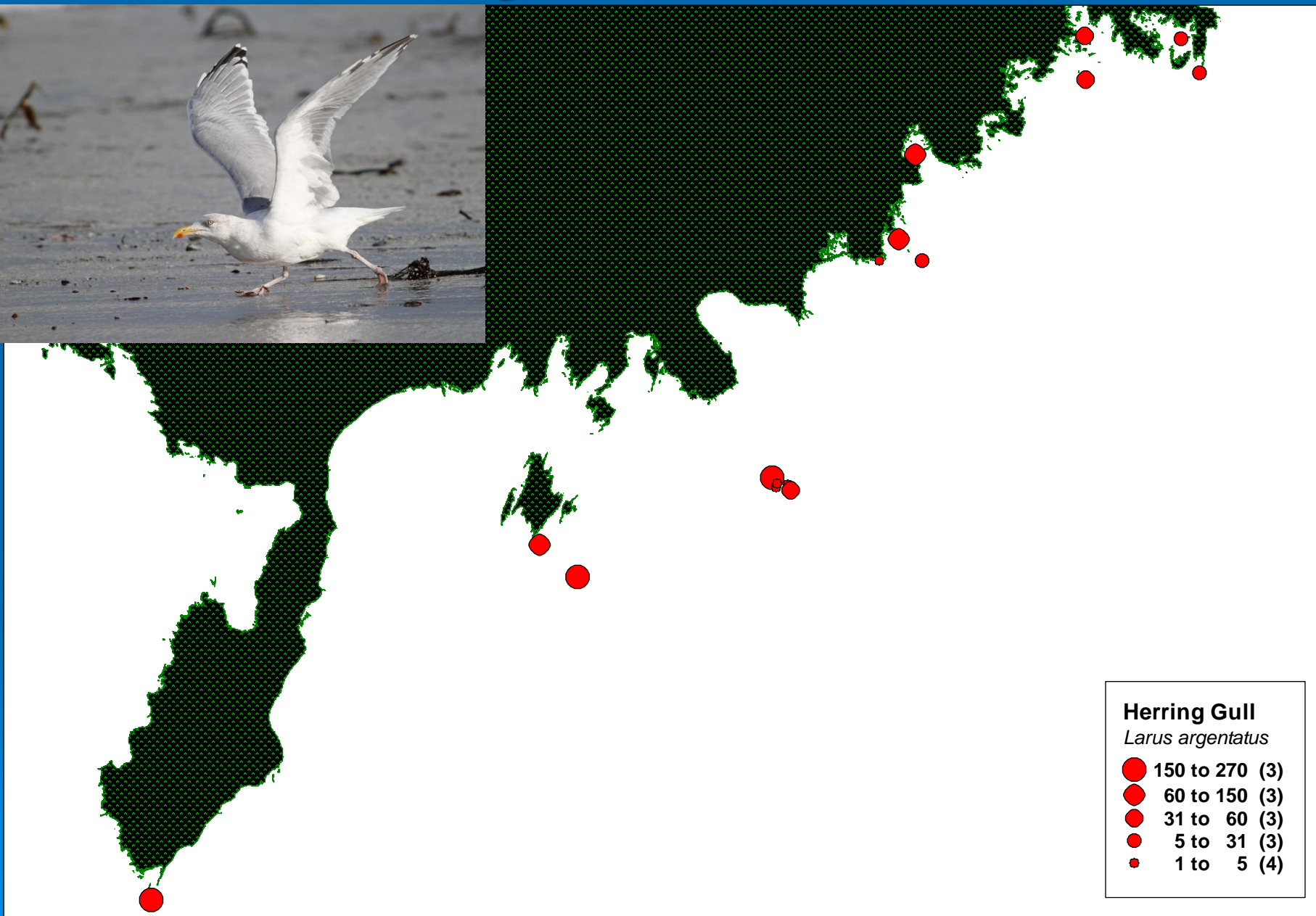


**Arctic Tern**  
*Sterna paradisaea*

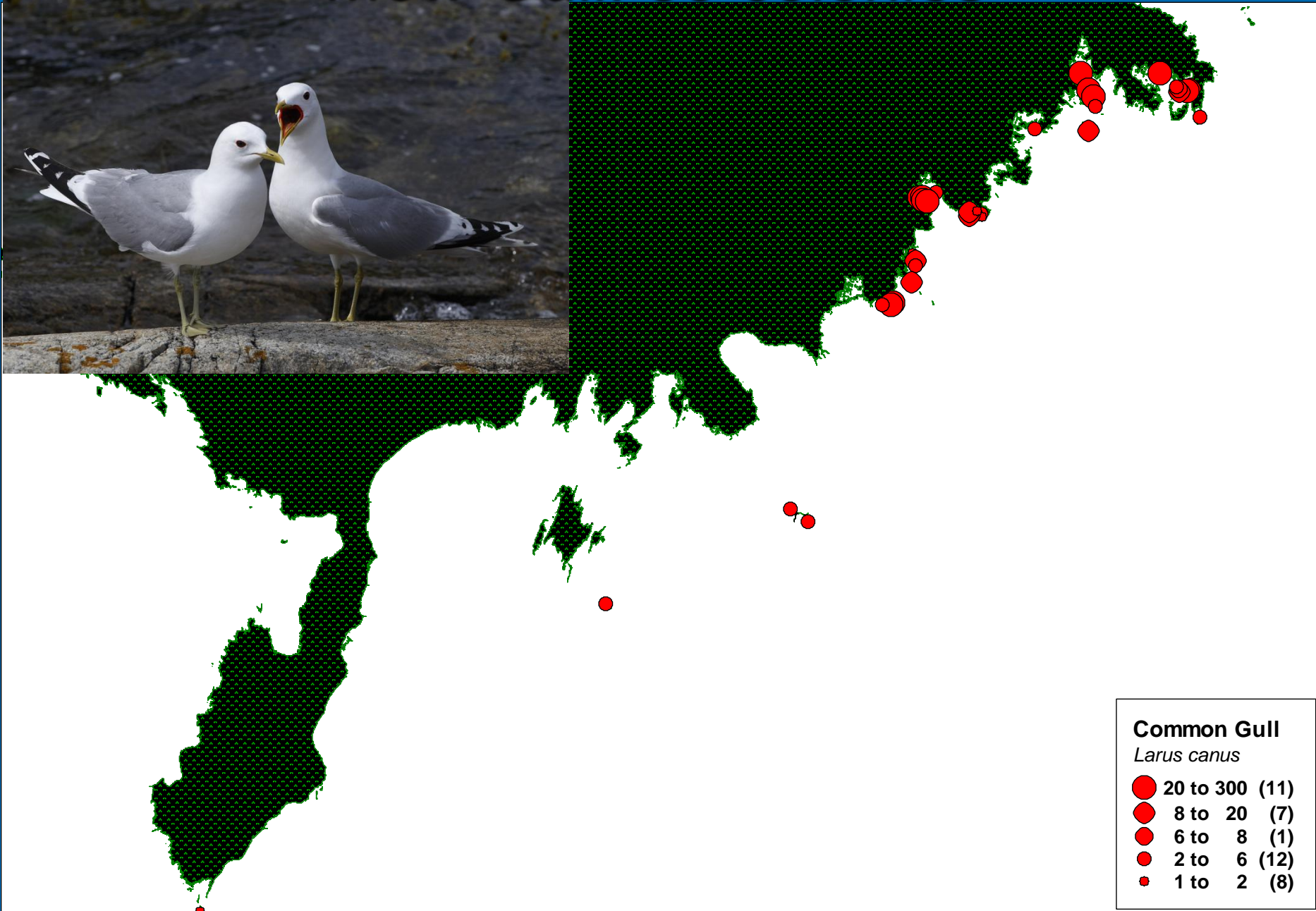
- 70 to 430 (8)
- 35 to 70 (7)
- 9 to 35 (9)
- 3 to 9 (6)
- 1 to 3 (9)



# Herring Gull: 16 colonies



# Mew Gull: 39 colonies



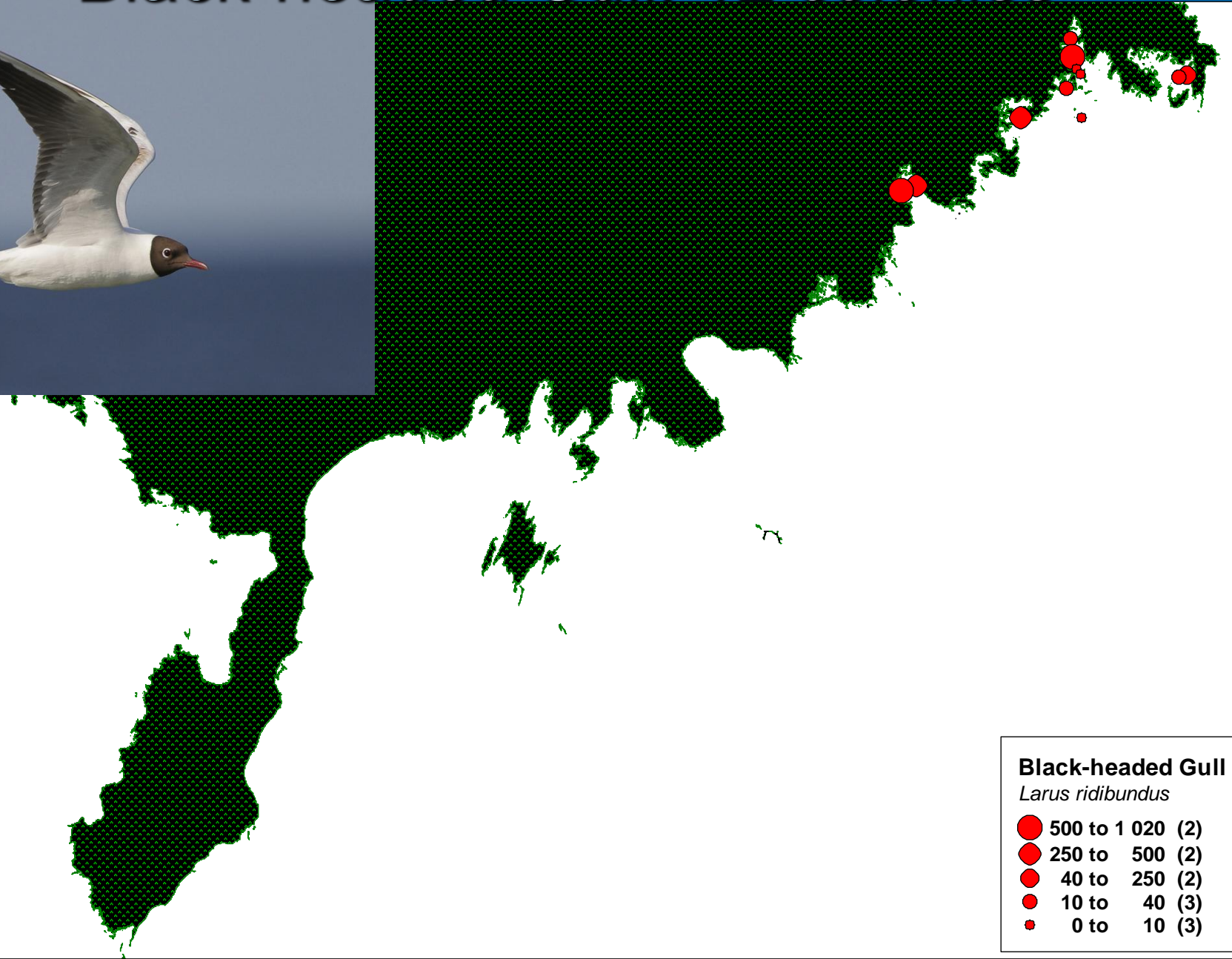
## Common Gull

*Larus canus*

●	20 to 300	(11)
●	8 to 20	(7)
●	6 to 8	(1)
●	2 to 6	(12)
●	1 to 2	(8)



# Black-headed Gull: 12 colonies

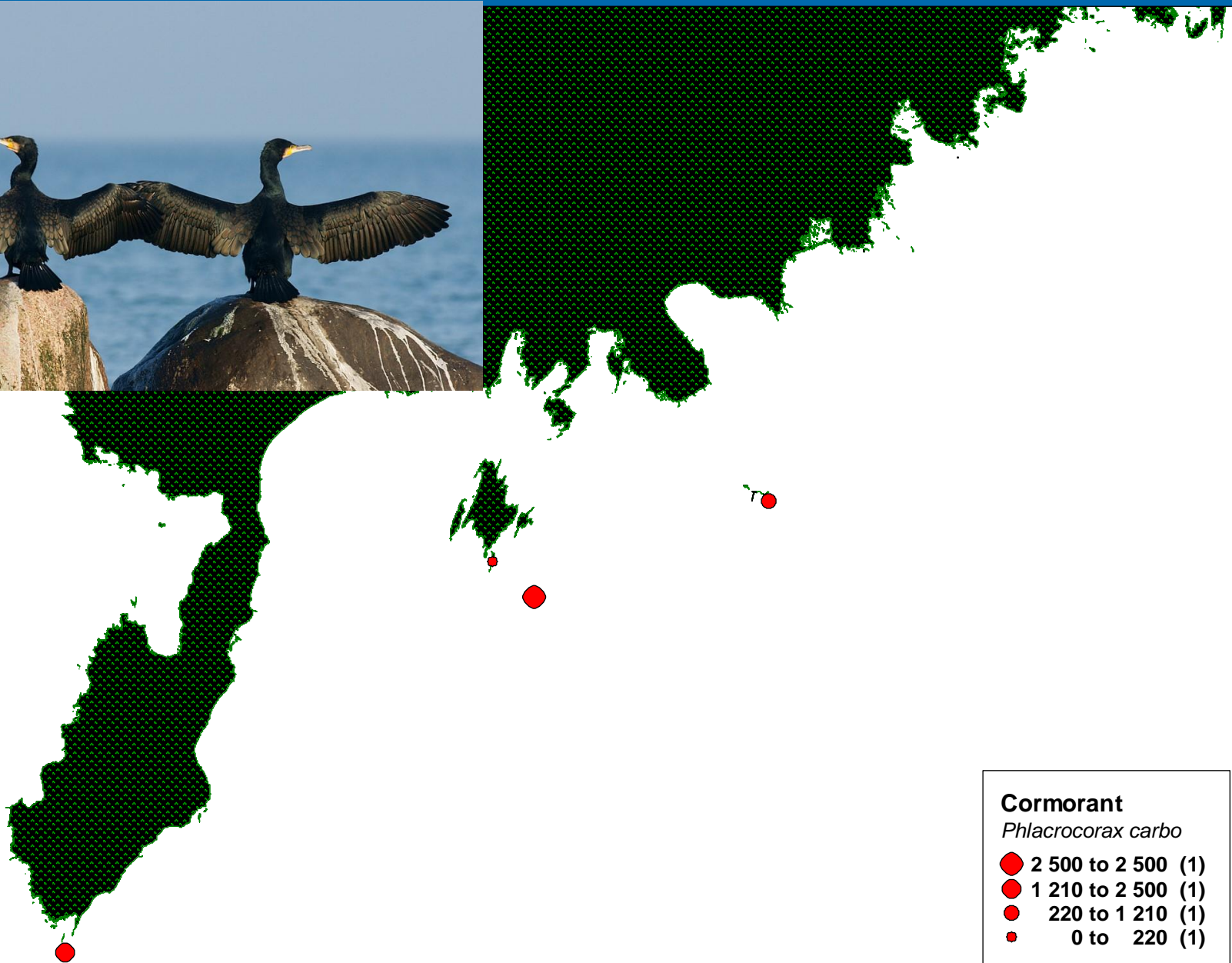


## Black-headed Gull

*Larus ridibundus*

●	500 to 1 020	(2)
●	250 to 500	(2)
●	40 to 250	(2)
●	10 to 40	(3)
●	0 to 10	(3)

# Great Cormorant: 4 colonies



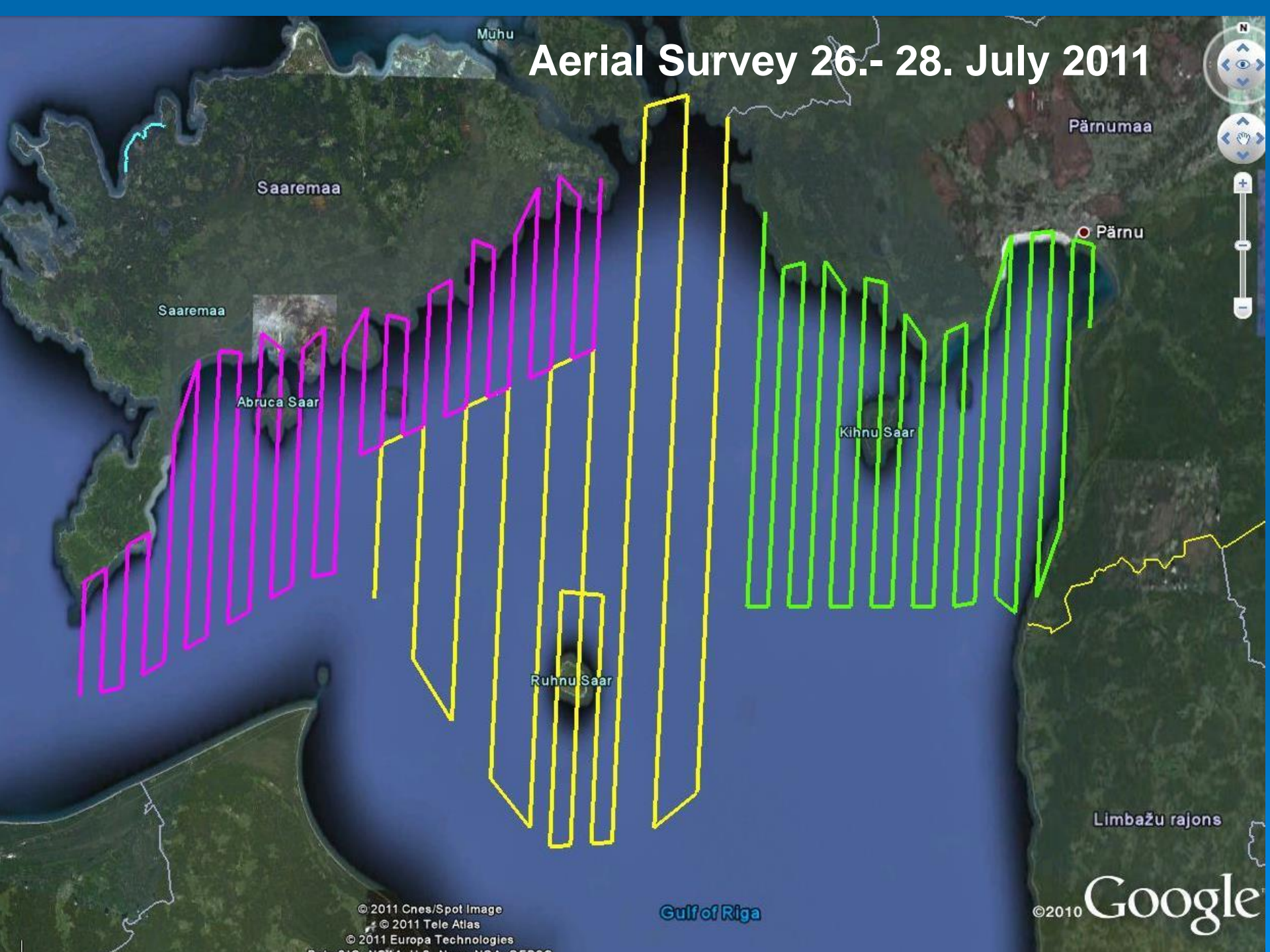
## Cormorant

*Phalacrocorax carbo*

- 2 500 to 2 500 (1)
- 1 210 to 2 500 (1)
- 220 to 1 210 (1)
- 0 to 220 (1)



# Aerial Survey 26.- 28. July 2011



# Prop Express Scandinavia ApS: Cessna 337







**Moulting Mute Swans**





Greylag Geese





**Moulting Black Scoters**